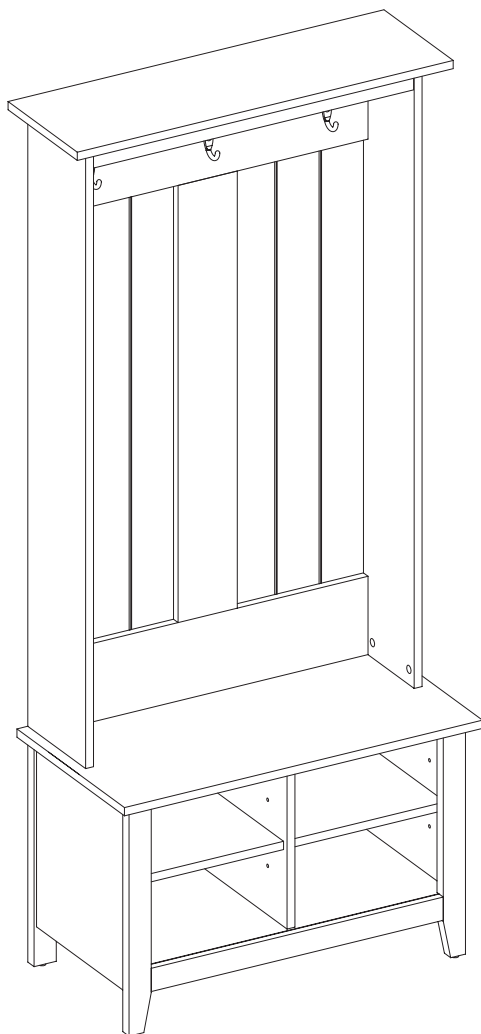
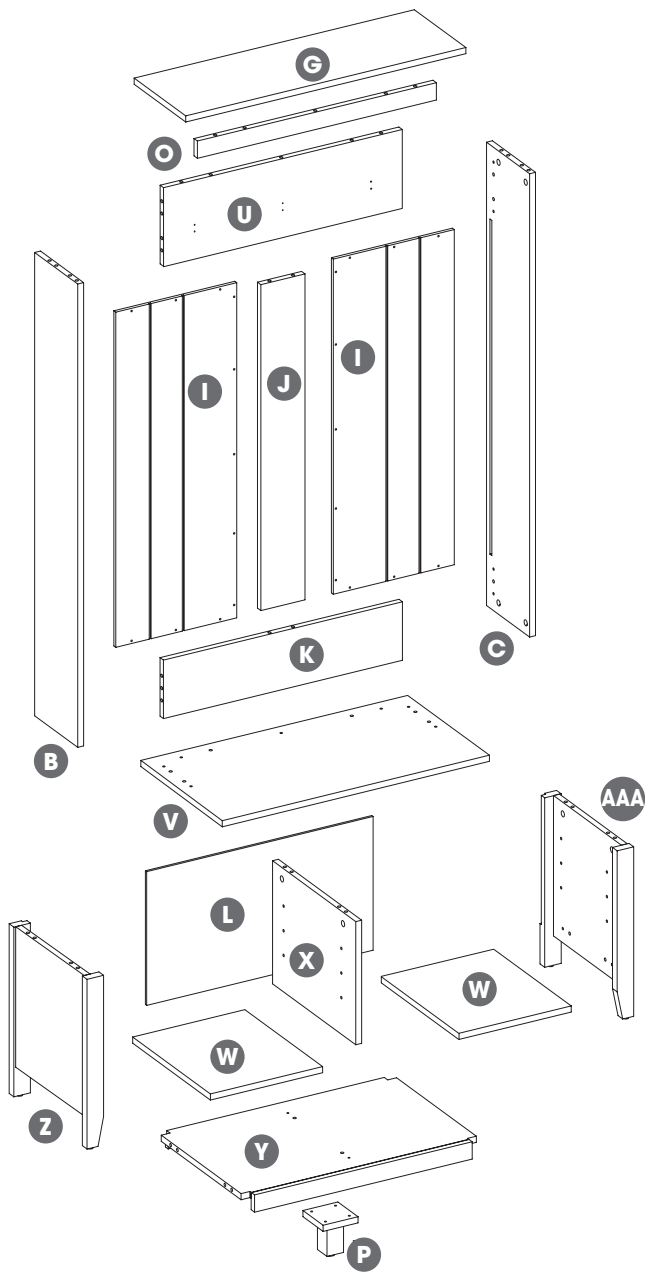
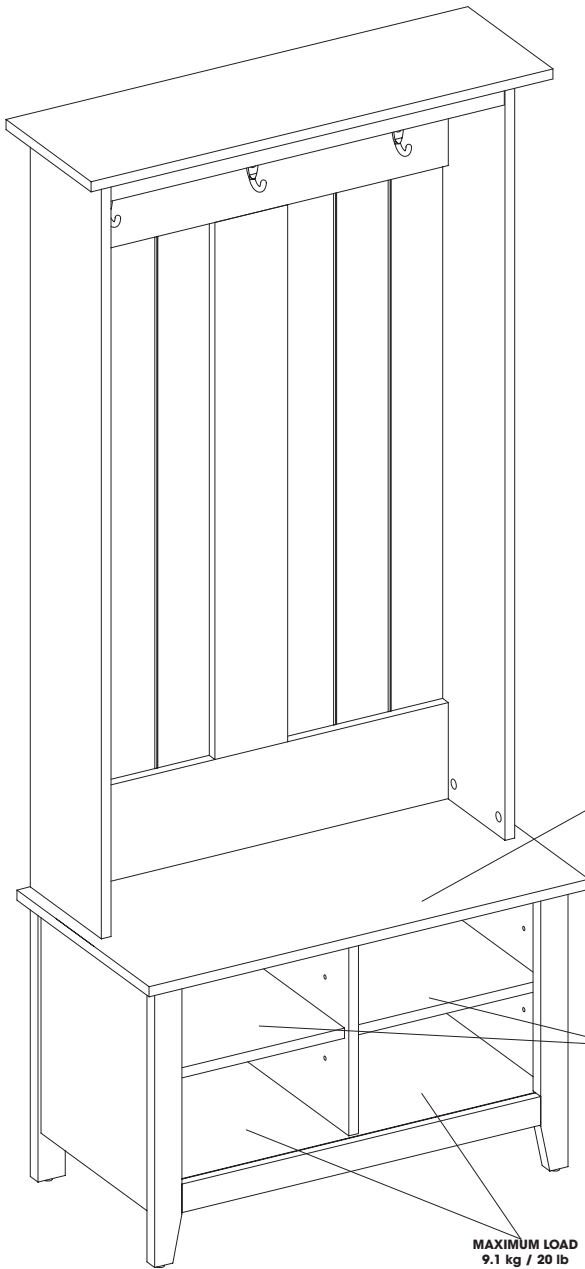


# Assembling instruction

118680 118681 118682 118683 118684







**MAXIMUM LOAD**  
114 kg / 250 lb  
**CHARGE MAXIMALE DE**  
114 kg / 250 lb  
**CARGA MÁXIMA**  
114 kg / 250 lb

**MAXIMUM LOAD**  
6.8 kg / 15 lb  
**CHARGE MAXIMALE DE**  
6.8 kg / 15 lb  
**CARGA MÁXIMA**  
6.8 kg / 15 lb

**MAXIMUM LOAD**  
9.1 kg / 20 lb  
**CHARGE MAXIMALE DE**  
9.1 kg / 20 lb  
**CARGA MÁXIMA**  
9.1 kg / 20 lb

# HARDWARE / QUINCAILLERIE / FERRETERÍA

AA

[x35]



PH-KDBZNC001

BB

[x43]



PH-KDCZNC001

CC

[x32]



Ø8x30mm  
PH-DWLNTL001

DD

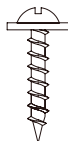
[x22]



Ø3.5x19mm

EE

[x14]



Ø3x16mm  
PH-SCRZNC001

GG

[x3]



Hanger

HH

[x6]



Ø3.5x15mm  
PH-SCRNKL008

II

[x4]



Bolt

JJ

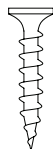
[x1]



PH-BKTWHT003

KK

[x4]



Ø4x25mm  
PH-SCRZNC018

LL

[x2]



Ø4x50mm  
PH-SCRBLK006

OO

[x14]



PH-KDBZNC001

PP

[x8]



PH-SPNSLV005

INSTALLED REPLACEMENT PARTS SB30665  
PIÈCES DE REMPLACEMENT INSTALLÉES SB30665  
PIEZAS DE REPUESTO INSTALADAS SB30665

MM

[x1]



PH-LVRBLK001

NN

[x1]



PH-THRZNC001

**ATTENTION:** Follow instructions in the order they are given below. This will ensure that your product is properly assembled.

**ATTENTION :** Suivre les instructions dans l'ordre donné ci-dessous. Cela vous assurera d'assembler correctement le produit.

**ATENCIÓN:** Siga las instrucciones en el orden que se indica a continuación. Esto asegurará que su producto se ensamble correctamente.

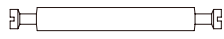
1

BB

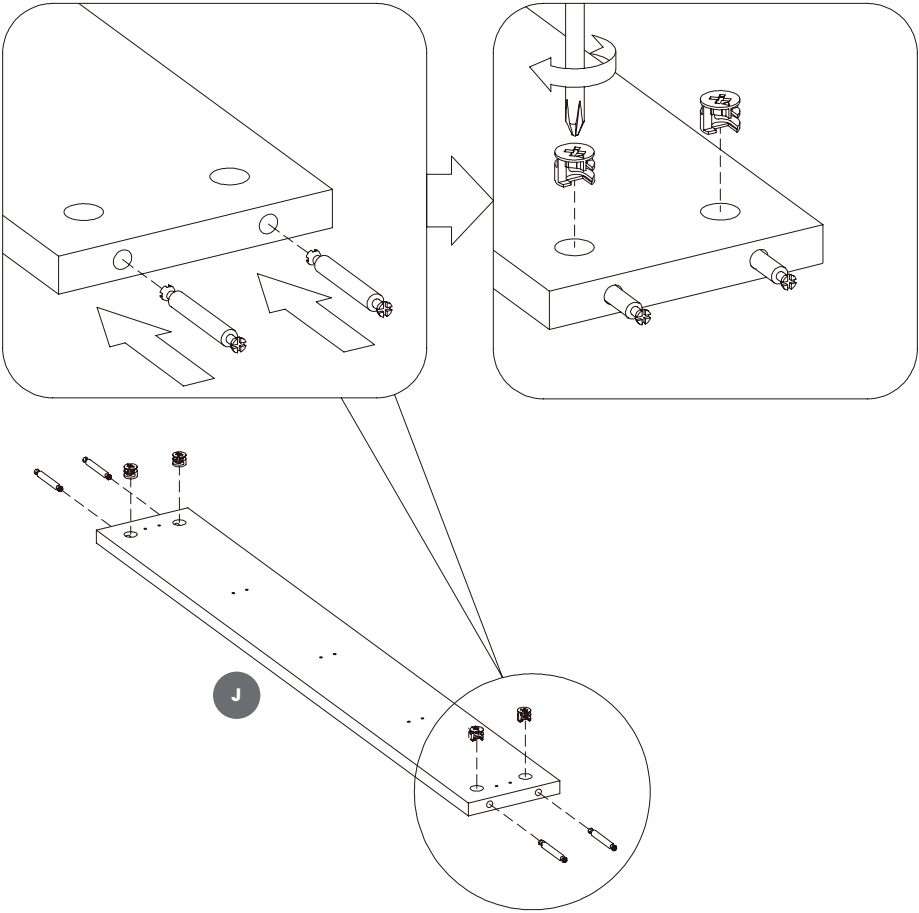


[x4]

II



[x4]

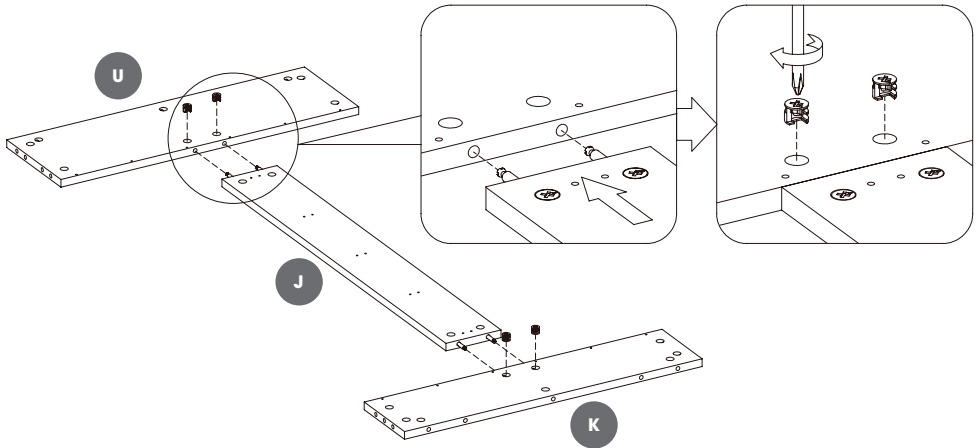


2

BB

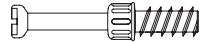


[x4]

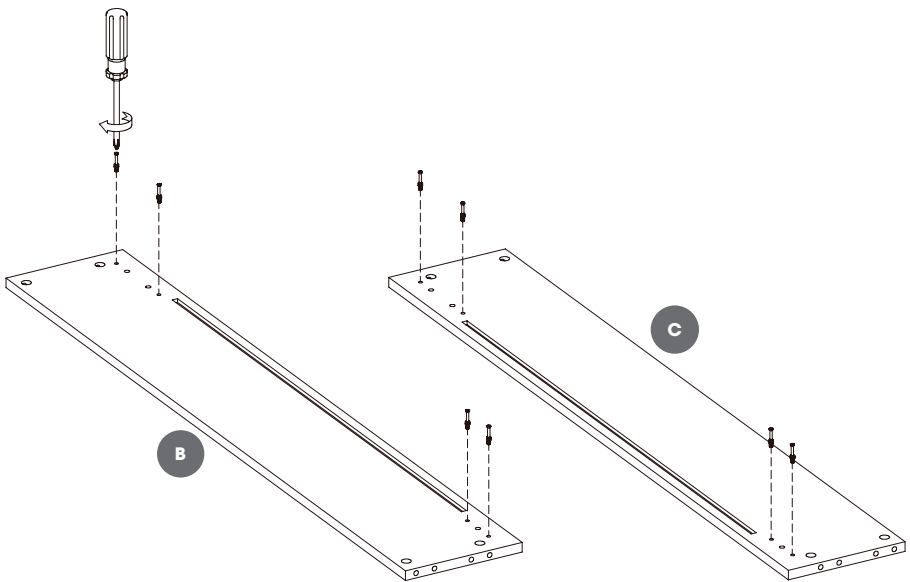


3

AA



[x8]

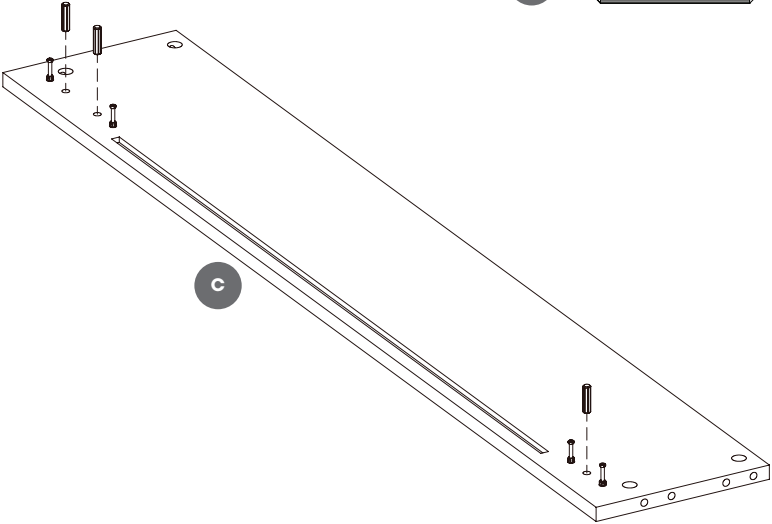


4

CC



[x3]

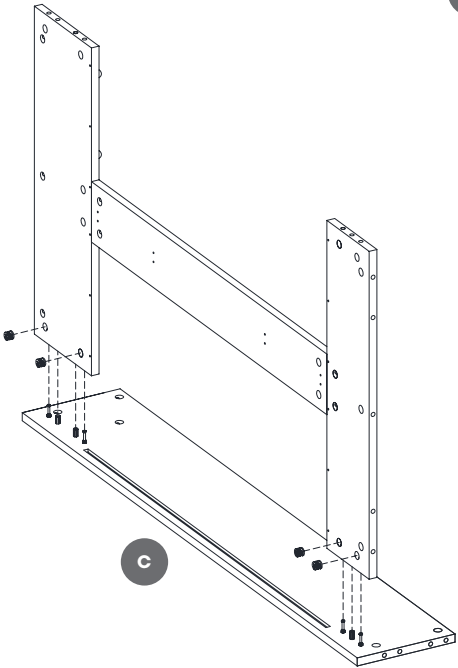


5

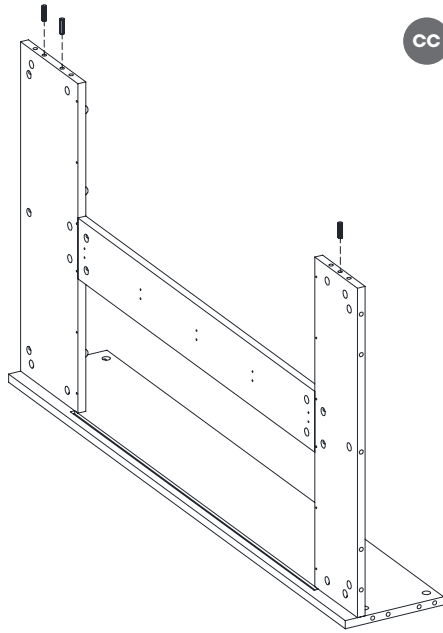
BB



[x4]



6

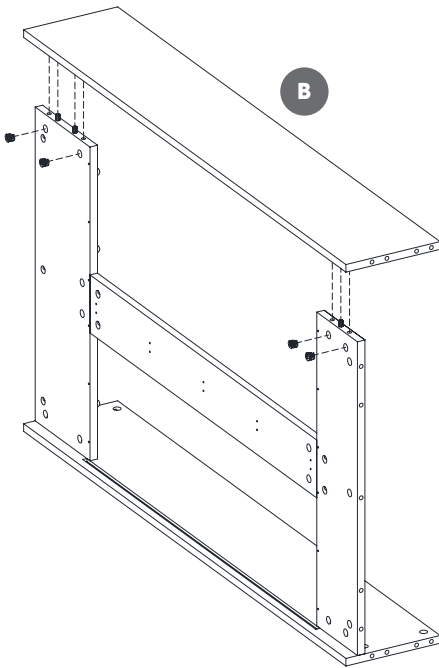


CC



[x3]

7

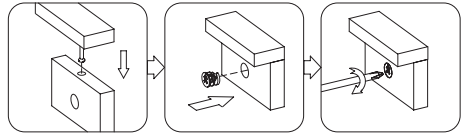


B

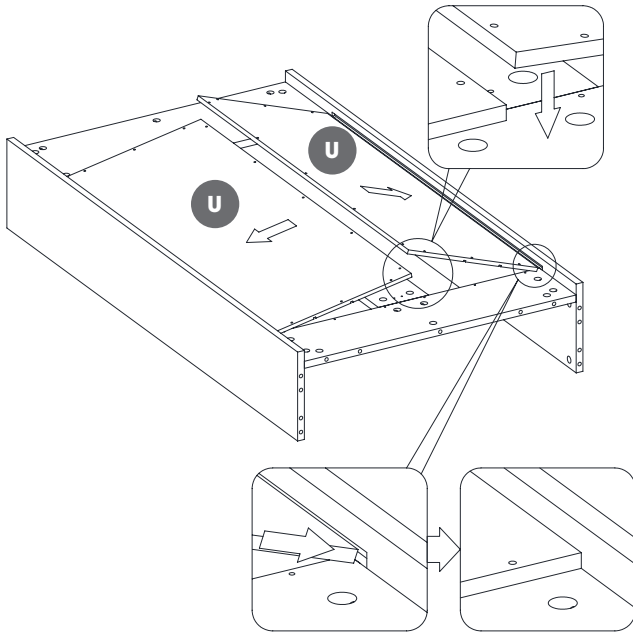
BB



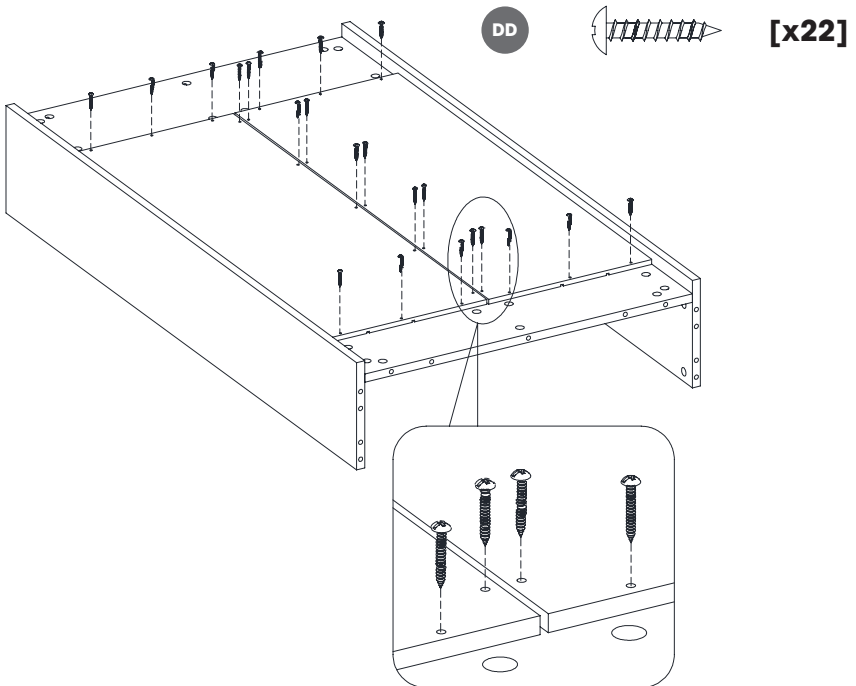
[x4]



8



9



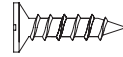
10

GG

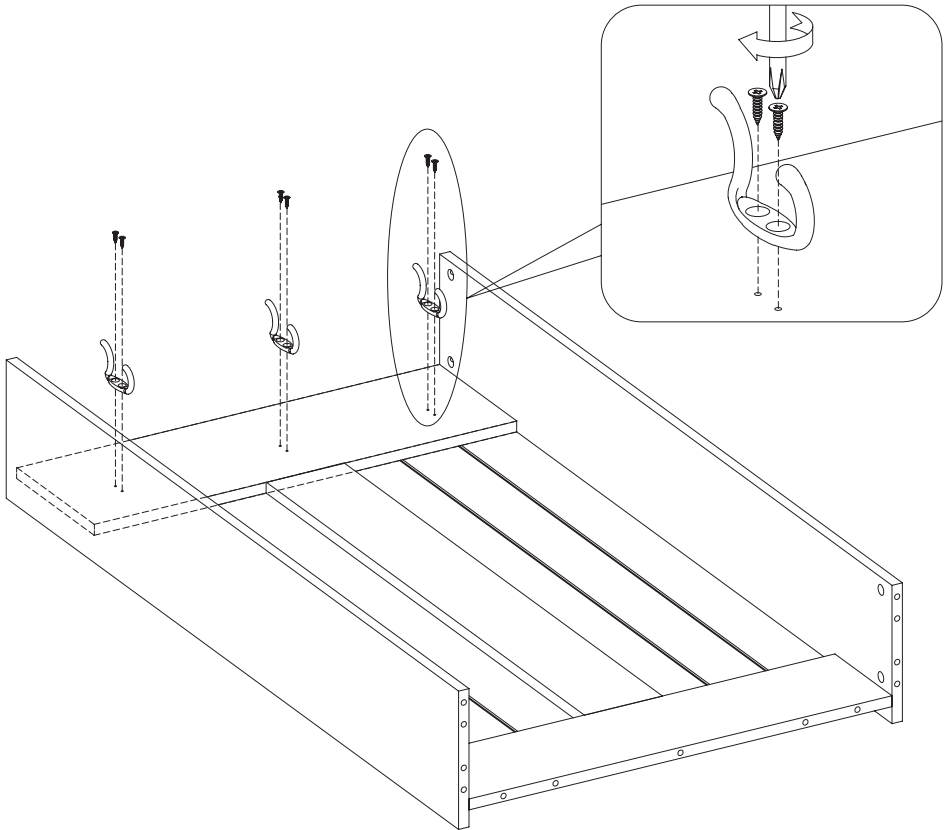


[x3]

HH



[x6]

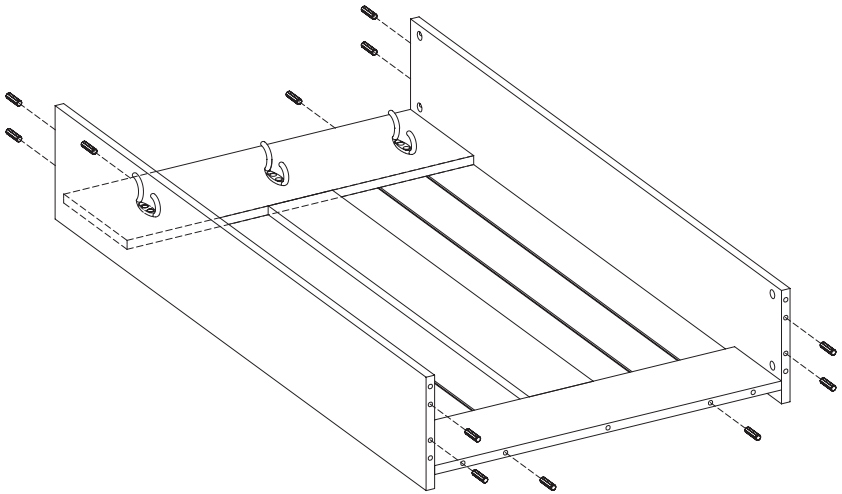


11

CC

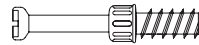


[x12]



12

AA

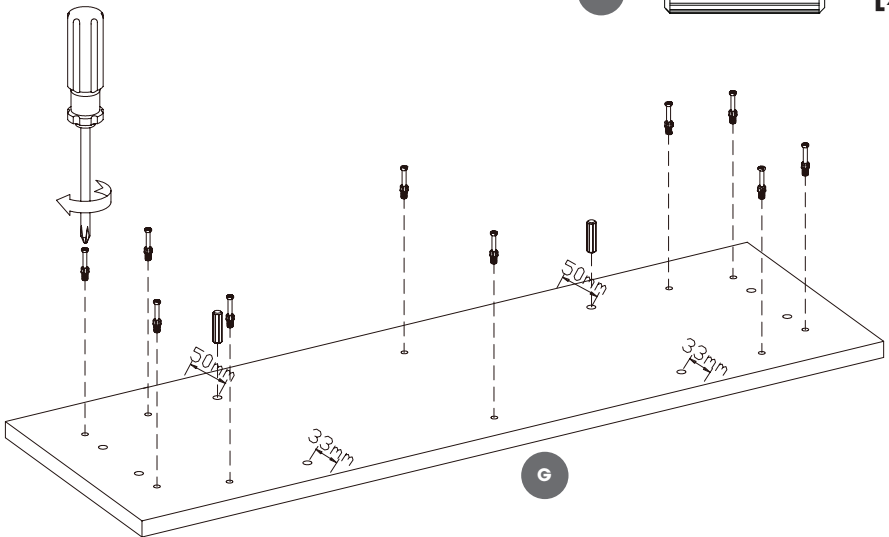


[x10]

CC



[x2]

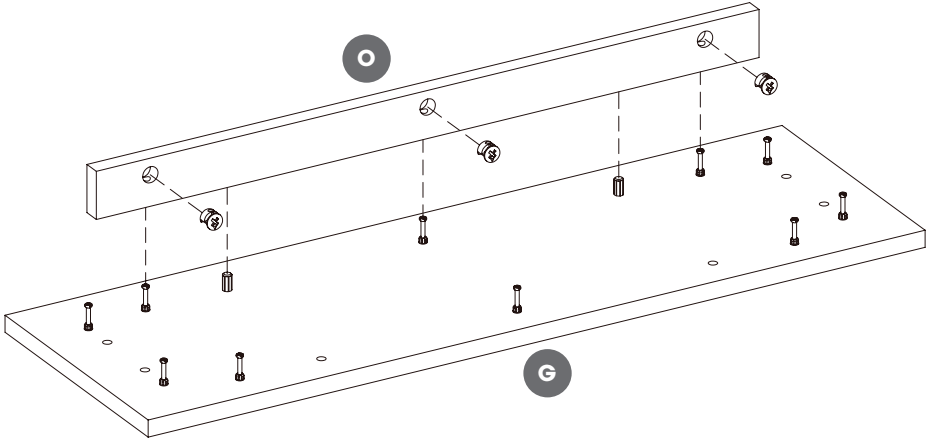


13

BB



[x3]

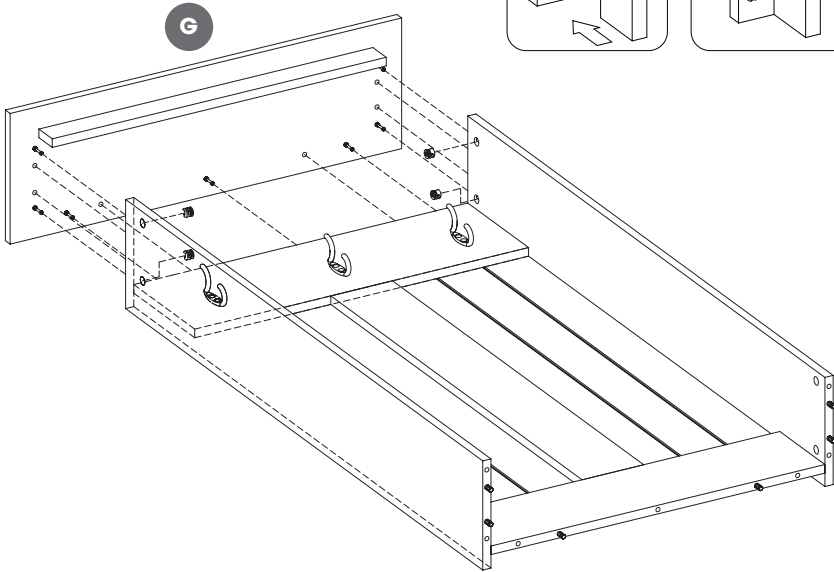
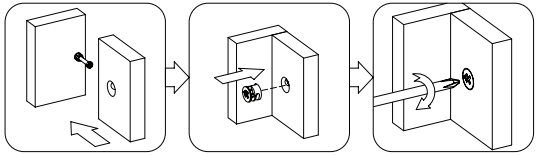


14

BB

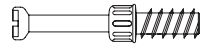


[x4]

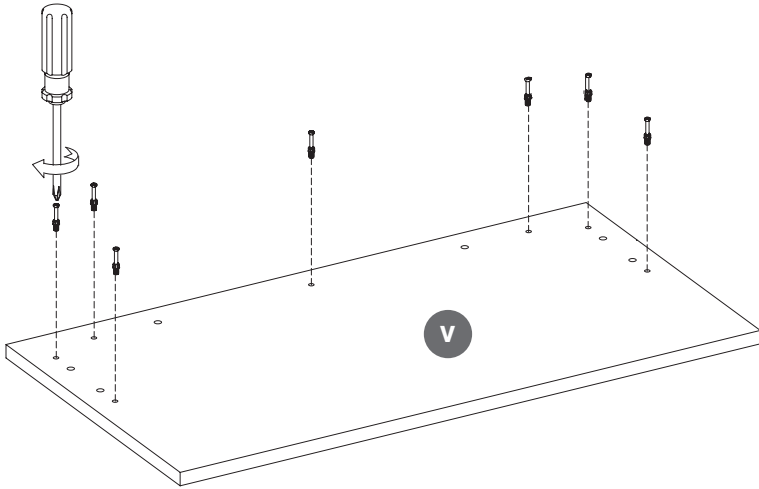


15

AA



[x7]

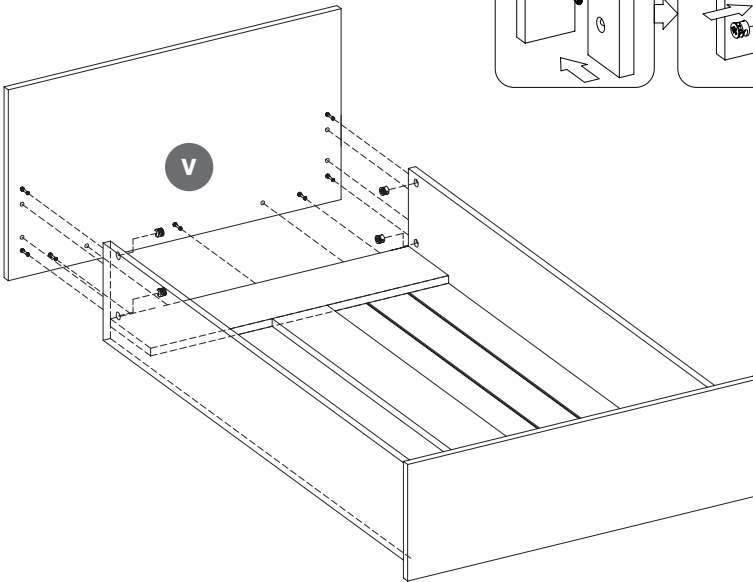
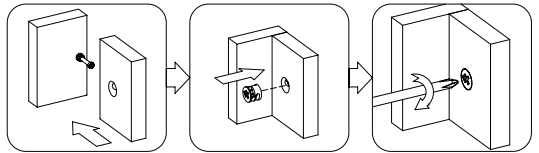


16

BB

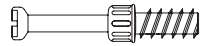


[x4]

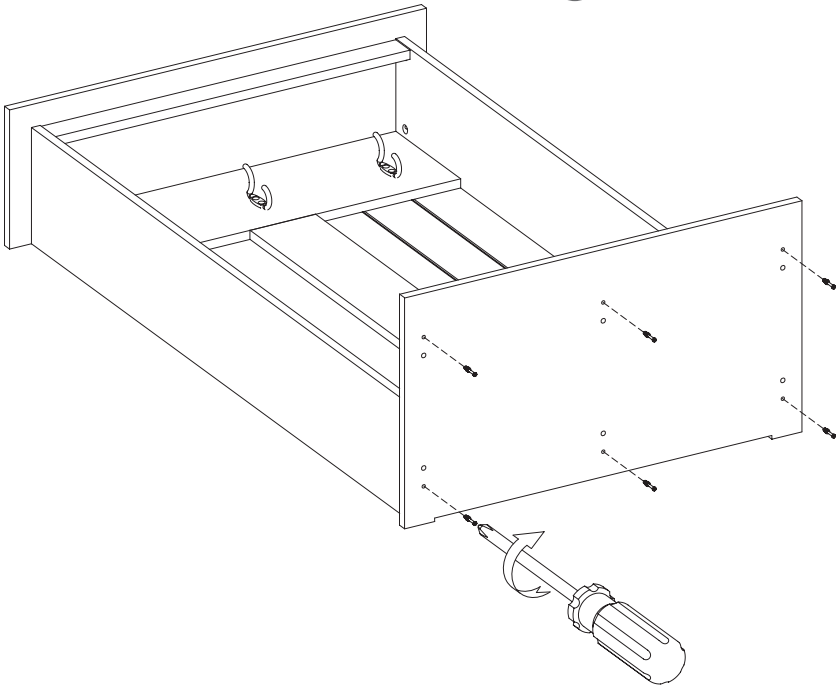


17

AA

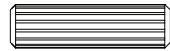


[x6]

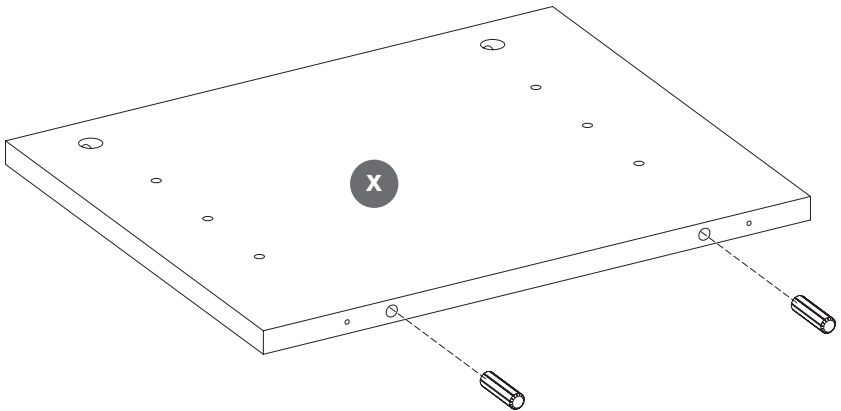


18

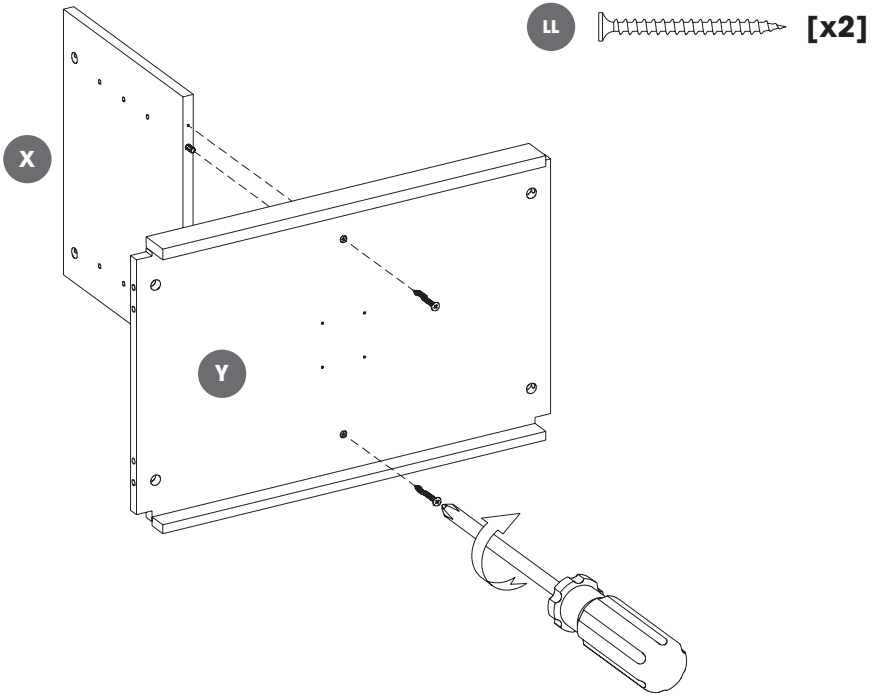
CC



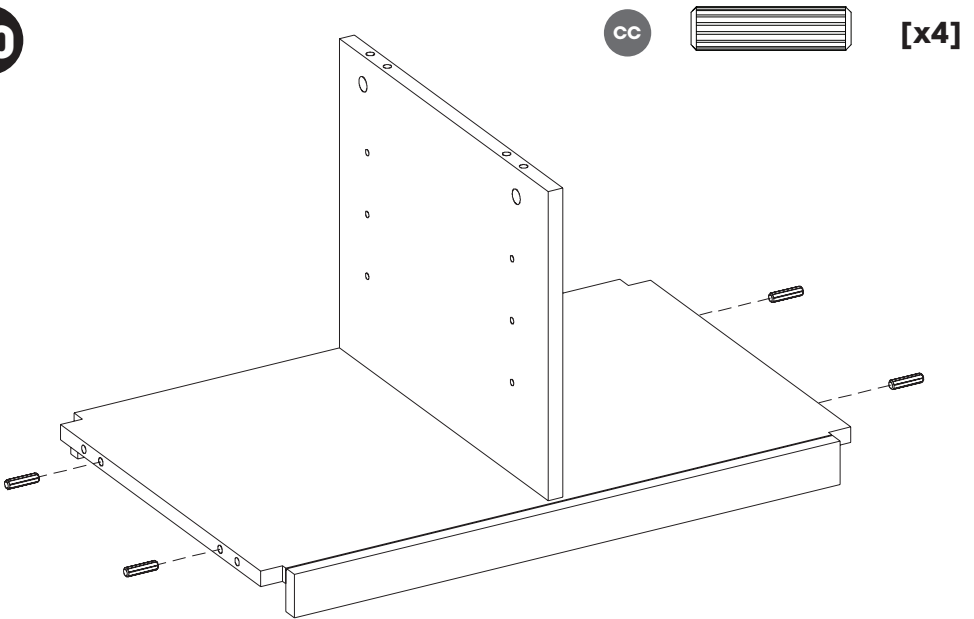
[x2]



19

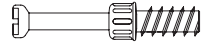


20

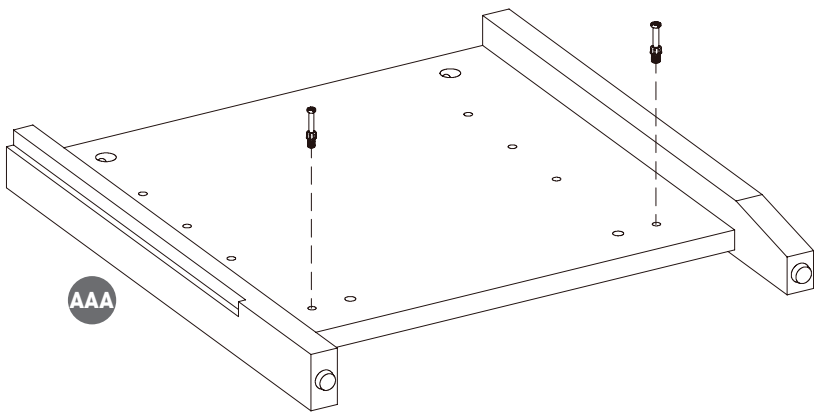
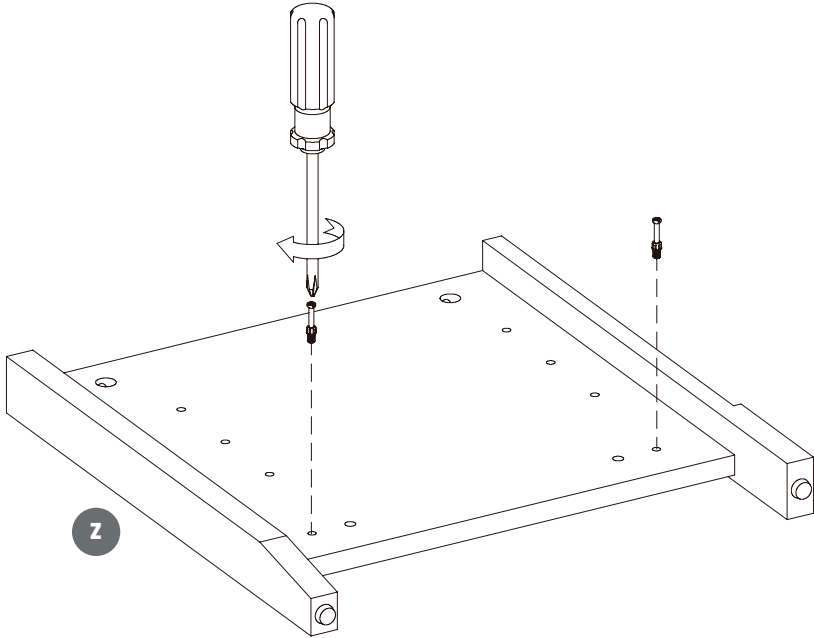


21

AA



[x4]

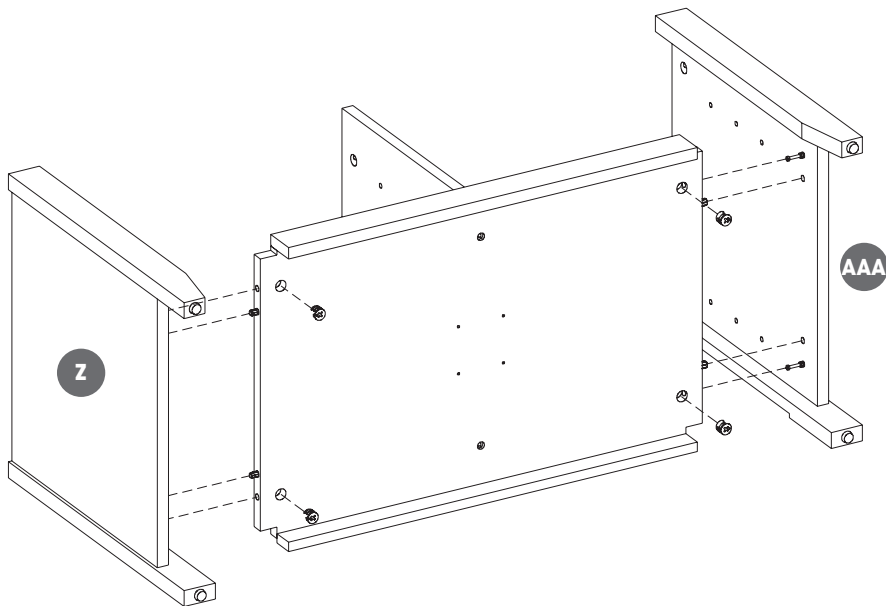


22

BB



[x4]

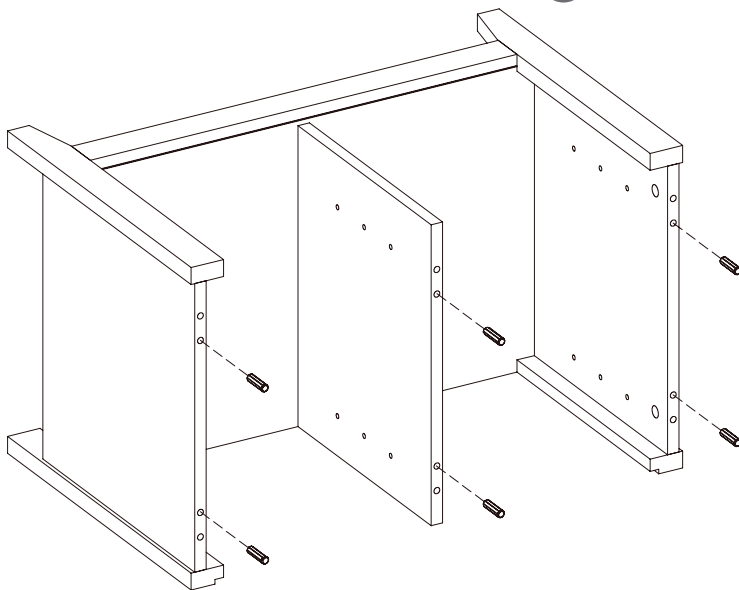


23

CC



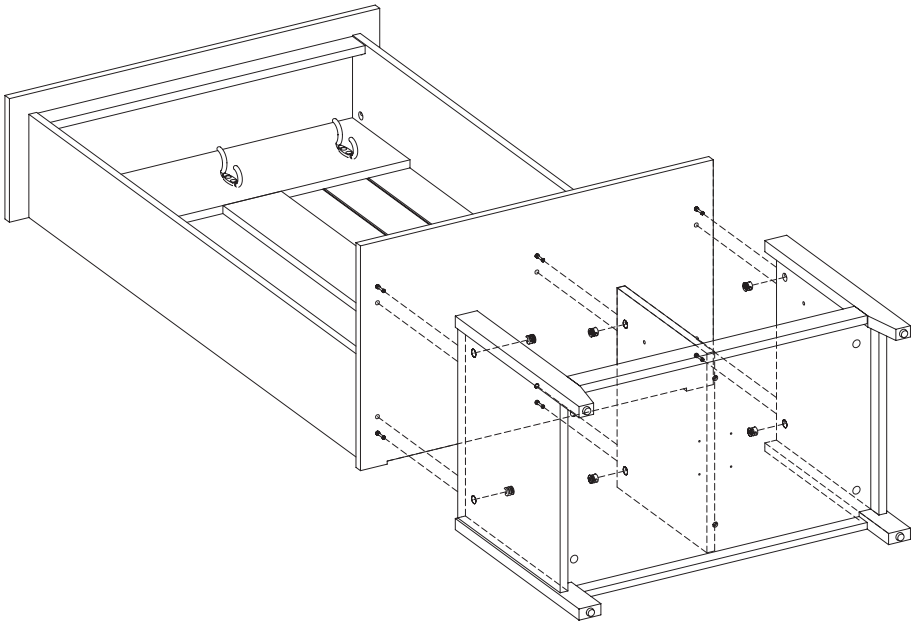
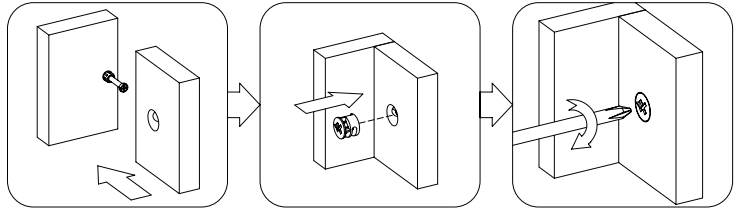
[x6]

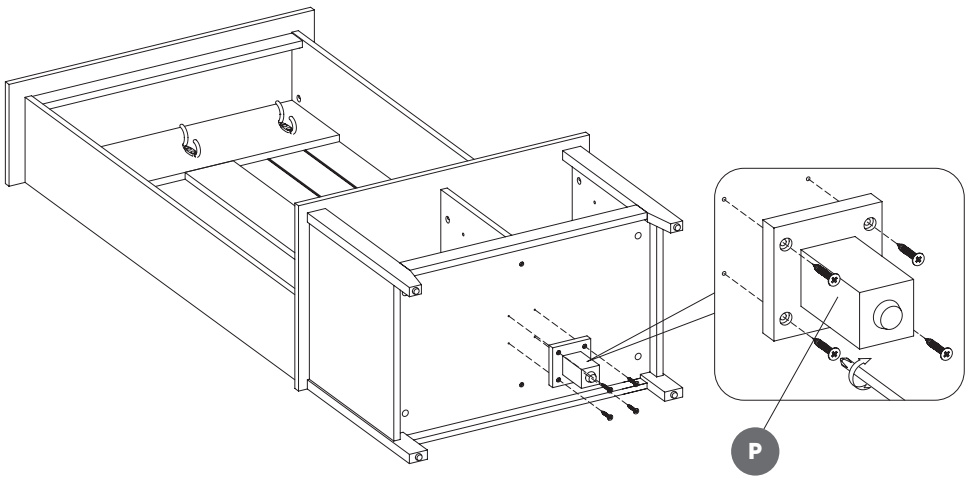


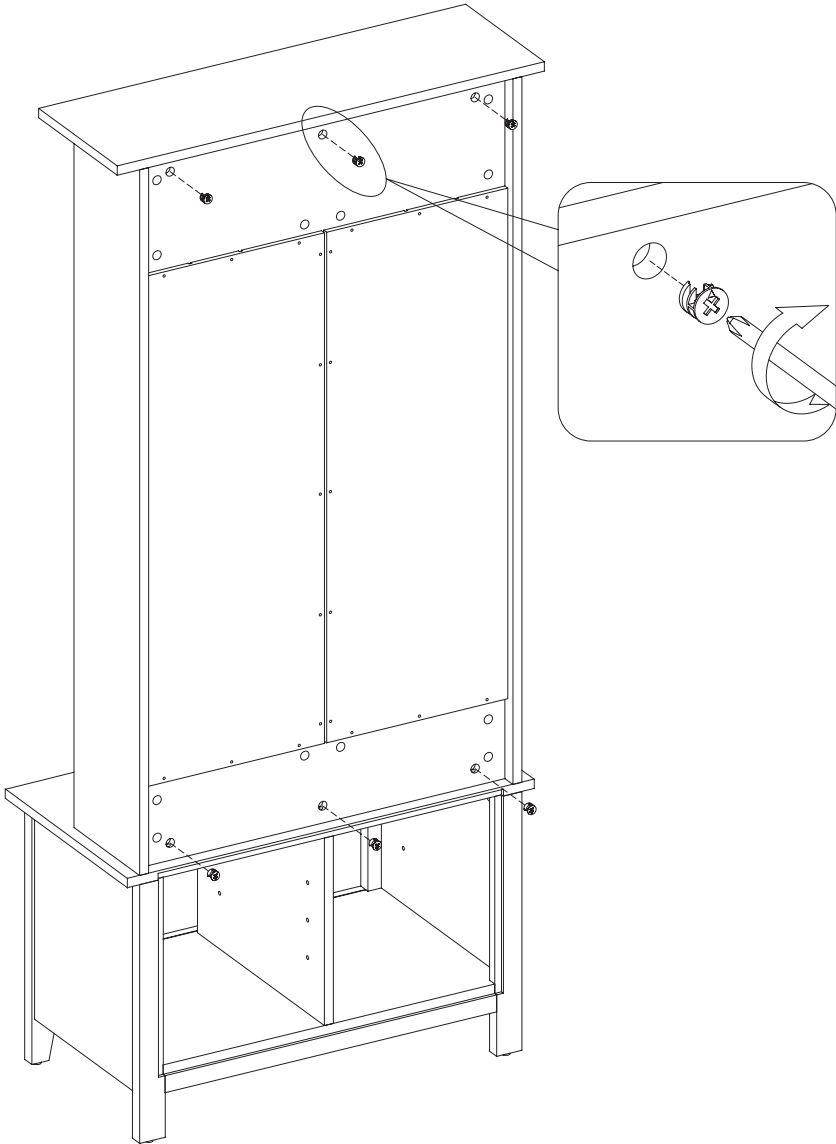
BB



[x6]

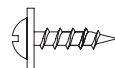




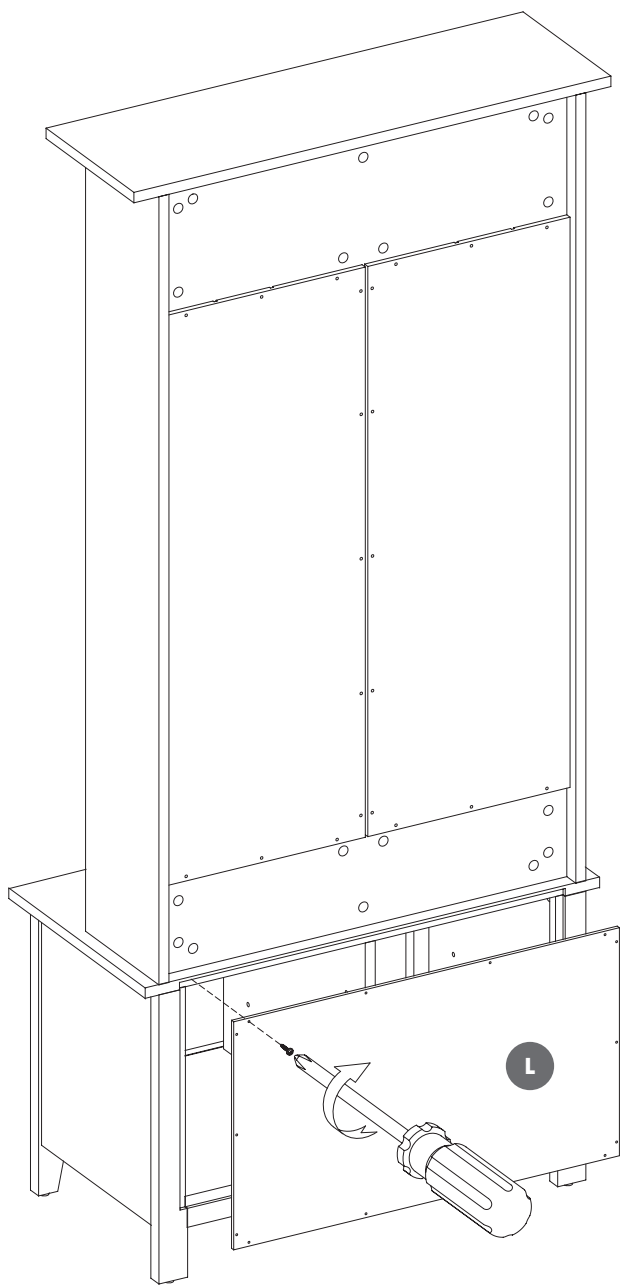


27

EE

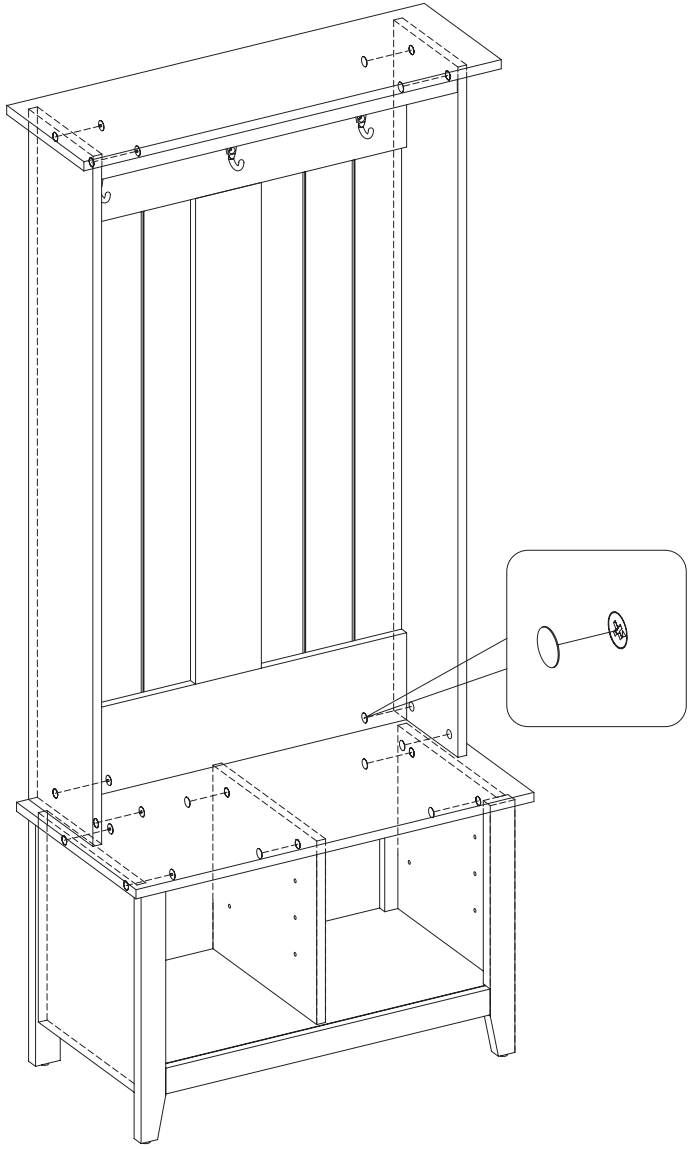


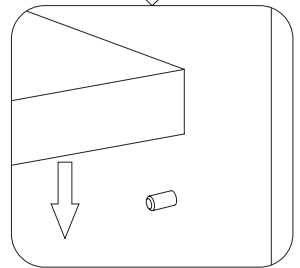
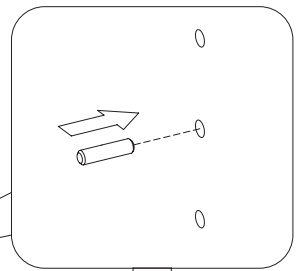
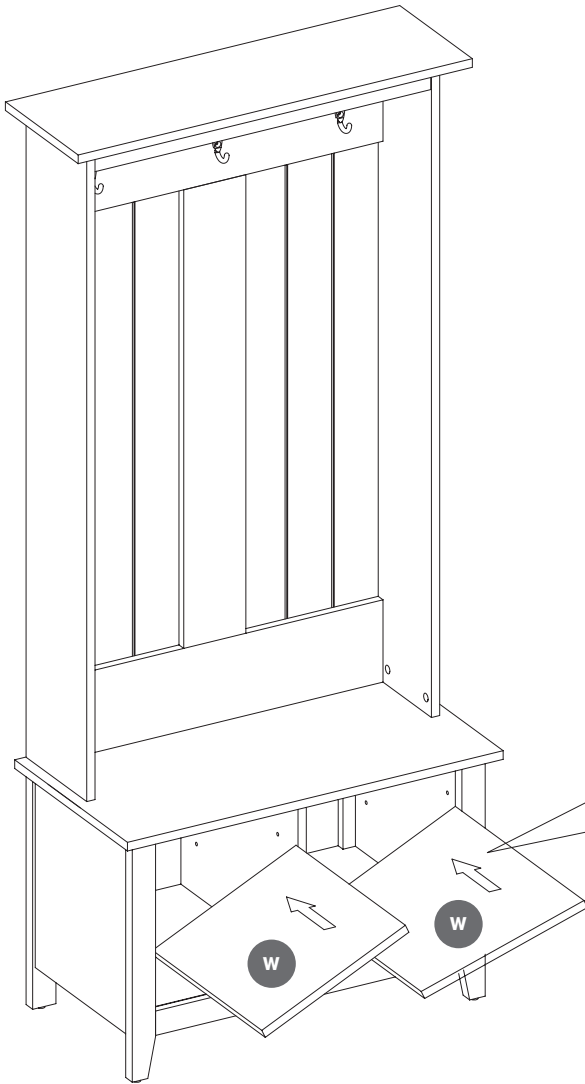
[x14]

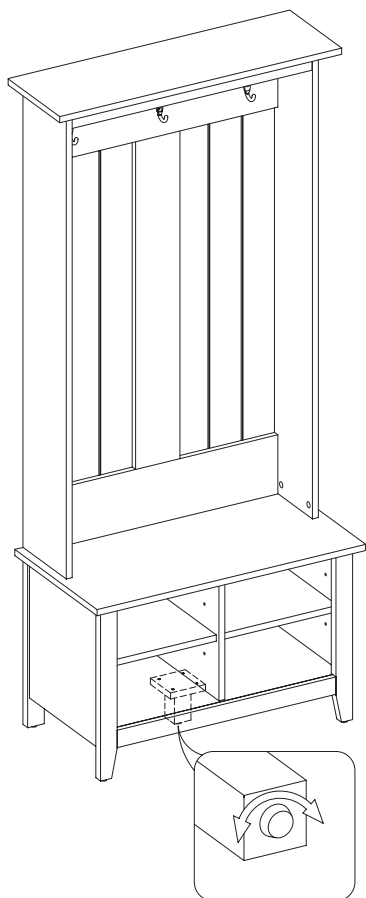




[x14]







**Note:** It is very important that your unit is level in order for your doors to function properly. After moving your unit to its final location, you may need to adjust the floor levelers.

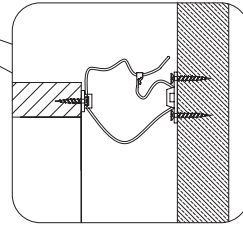
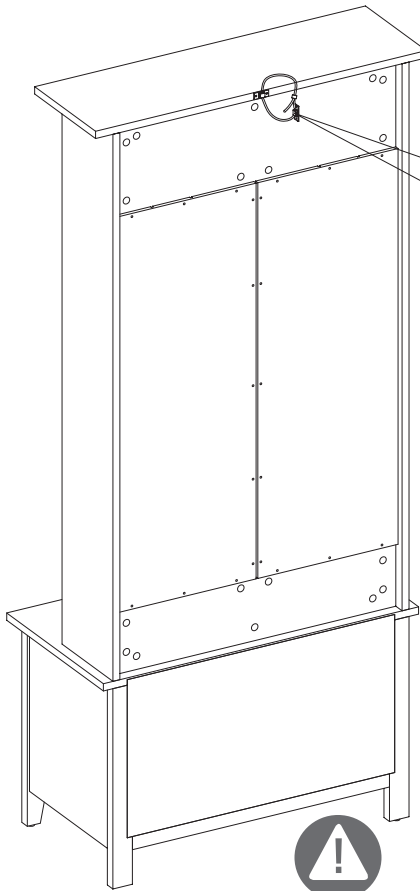
**Remarque:** Pour que les portes fonctionnent correctement, il est très important que l'appareil soit bien horizontal. Une fois que l'appareil sera arrivé sur son emplacement définitif, vous aurez peut-être besoin d'ajuster les réglages des pieds.

**Nota:** Para que las puertas funcionen correctamente, es muy importante que la unidad esté nivelada. Una vez que la unidad llegue a su ubicación final, es posible que necesite ajustar la configuración de los pies..

JJ



[x1]



**Wall Stud**  
**Poteau Mural**  
**Montante De**  
**Madera**



**Warning:** You must install the tip restraint hardware to help prevent any accidents or damage to the unit. We strongly recommend attaching the tip restraint hardware to a wall stud and your unit. For all other wall types, please visit your local hardware store to obtain the proper hardware.

**Avertissement:** Il est nécessaire d'installer les pièces d'arrimage anti basculement pour prévenir les accidents ou les dommages à l'unité.

« Nous vous recommandons fortement de fixer le support avec retenue anti-basculement à un poteau mural et à votre unité. » En ce qui concerne tous les autres types de murs, veuillez visiter votre quincaillerie pour obtenir les articles appropriés.

**Advertencia:** Debe instalar el Herraje contra Caídas para evitar accidentes o que se dañe la unidad.

«Recomendamos enfáticamente sujetar el extremo de la herramienta de retención a un perno de pared y su unidad». Respecto de todos los demás tipos de pared, vaya a su ferretería local para obtener las herramientas adecuadas.