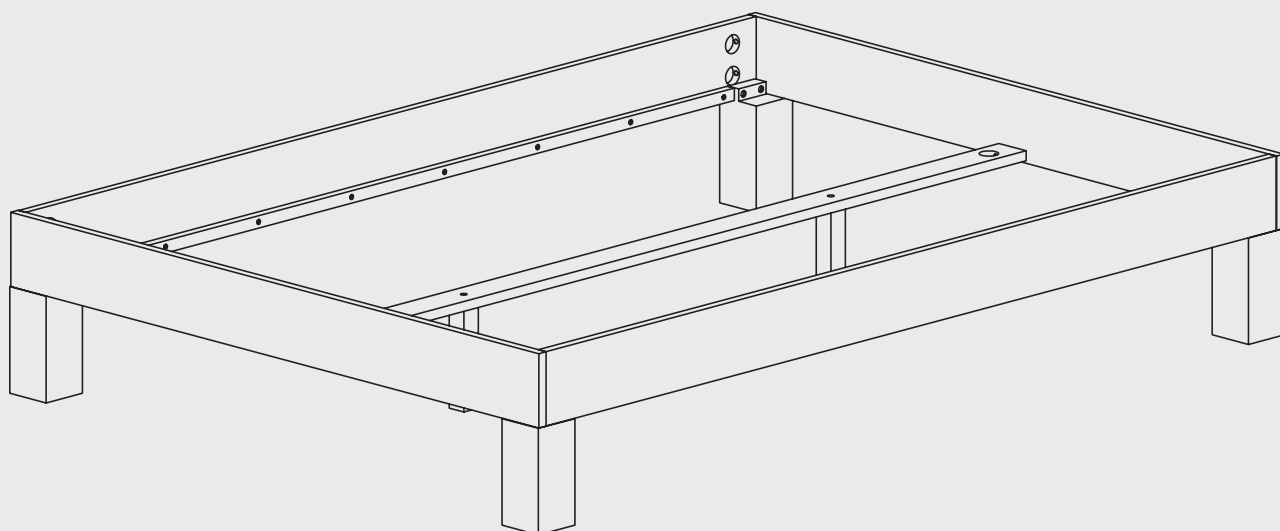


skølm.

Floki
Bett





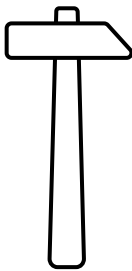
Hey,

wir freuen uns, dass Du Dich für unser Produkt entschieden hast. Beachte die kommenden Hinweise, um den Aufbau problemlos zu gestalten.

Viel Spaß mit Deinem Produkt!

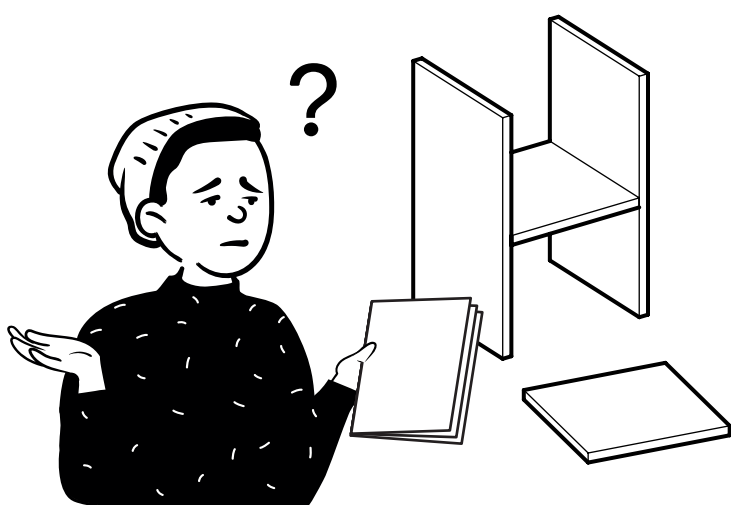
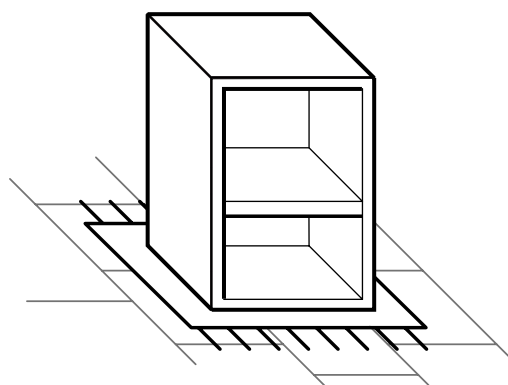
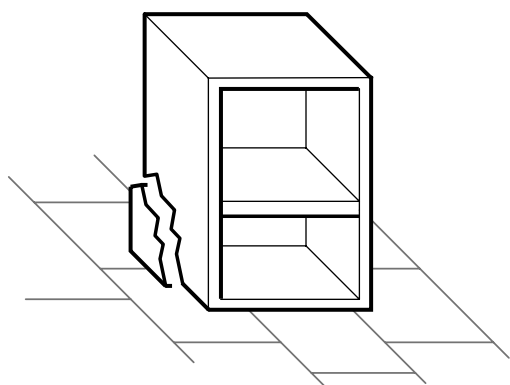
50%

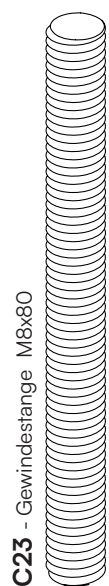
weniger Fehler beim Aufbau durch
sorgfältiges Lesen der Anleitung



30-40

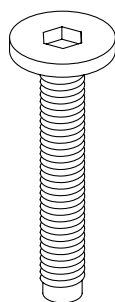
min





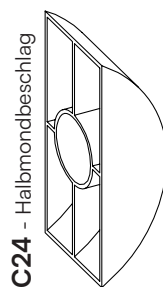
C23 - Gewindestange M8x80

10x



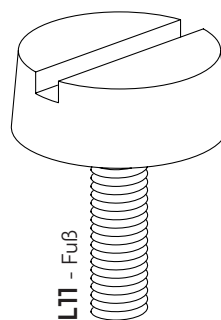
F20 - Schraube M6x35

10x



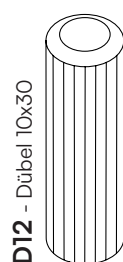
C24 - Halbmondbeschlag

10x



L11 - Fuß

2x



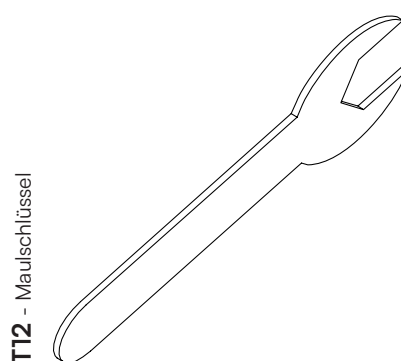
D12 - Dübel 10x30

8x



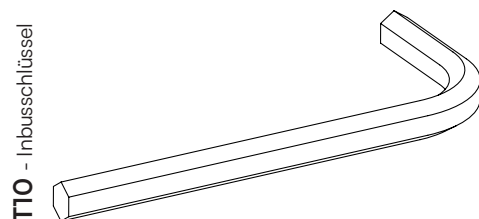
C22 - Mutter M8

10x



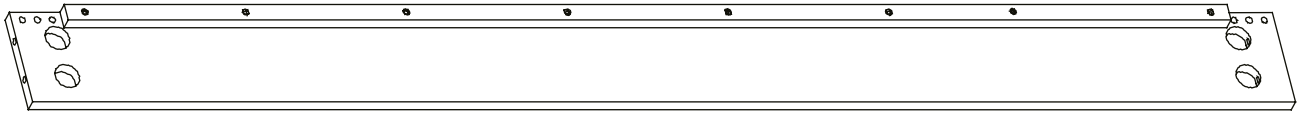
T12 - Maulschlüssel

1x

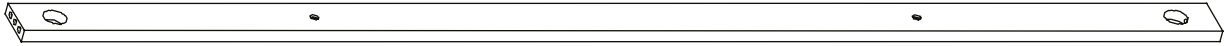


T10 - Inbusschlüssel

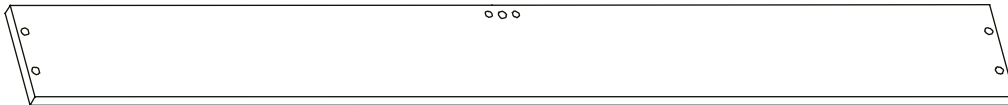
1x



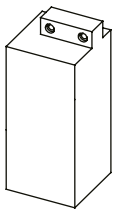
1 Bettseite
2x



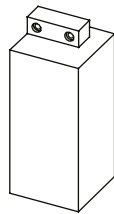
2 Lattenrostauflage
1x



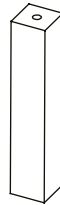
3 Kopf- und Fußteil
2x



4 Fuß, links
2x



5 Fuß, rechts
2x

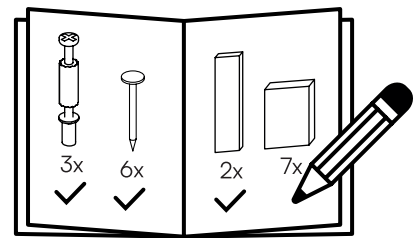


6 Fuß, mittig
2x

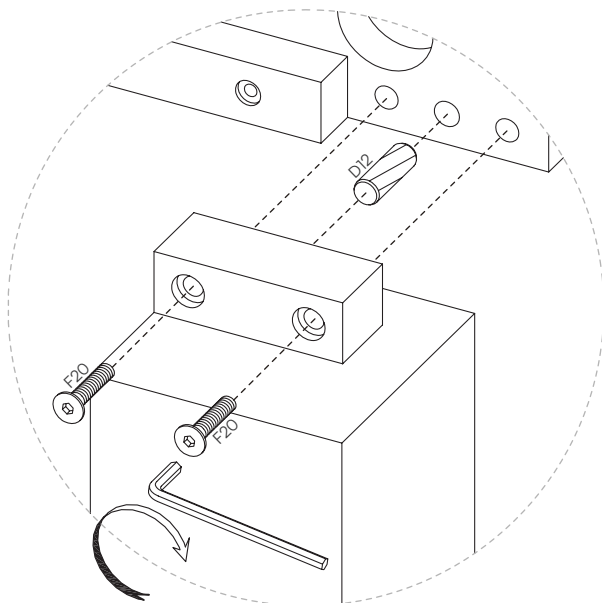
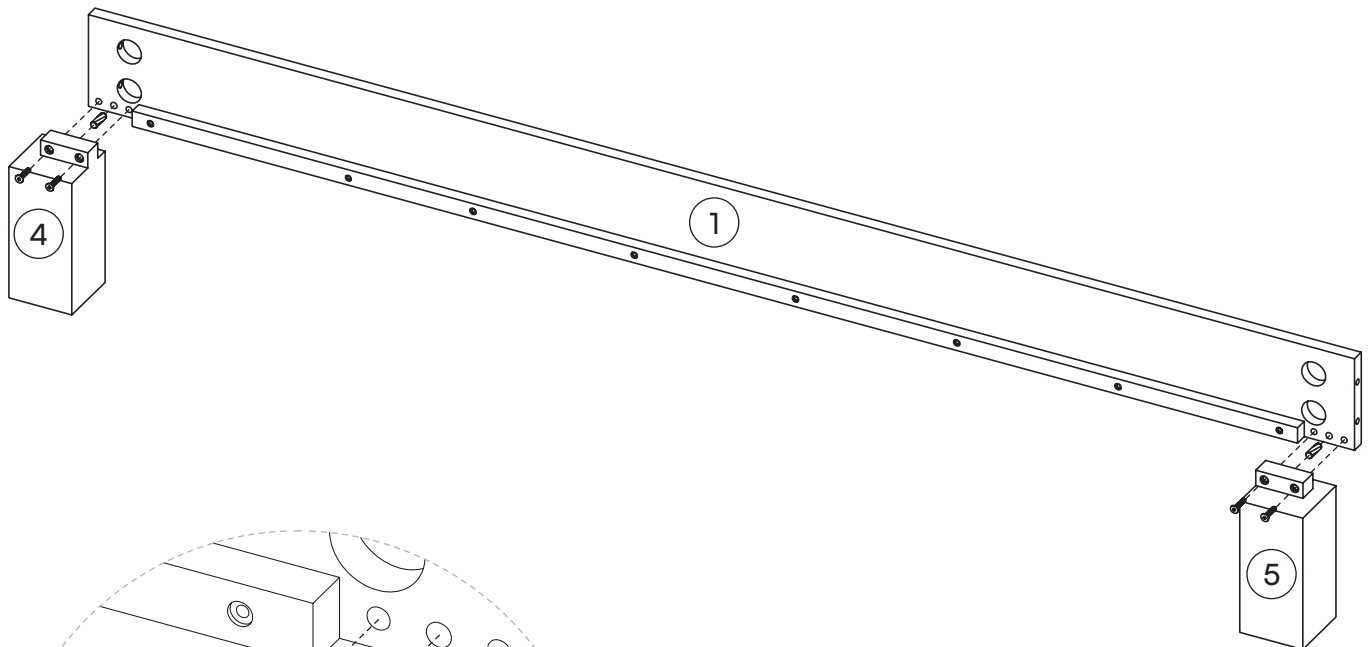
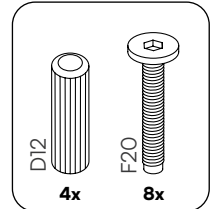
Ein letzter Check:

Bitte überprüfe, ob Du alle Teile hast.

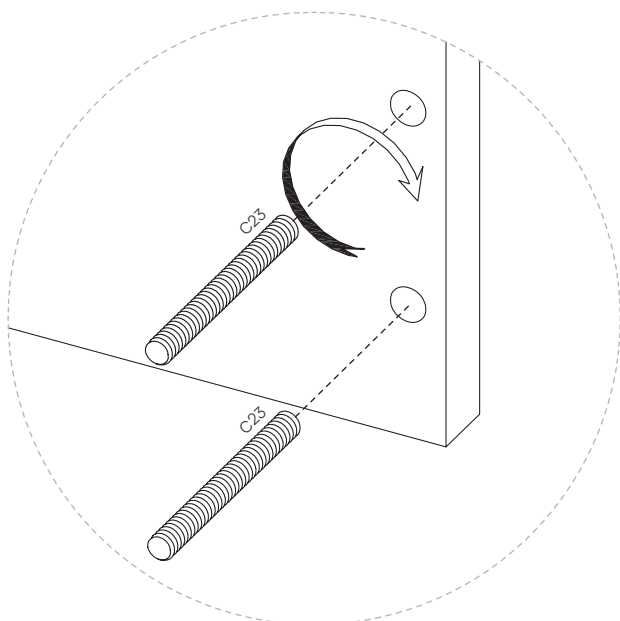
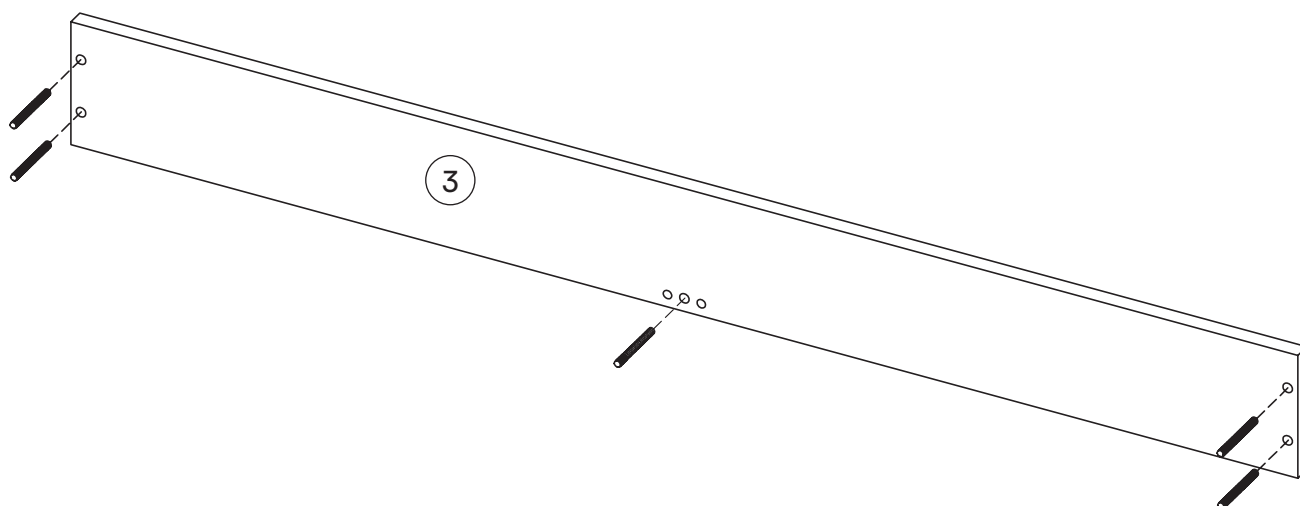
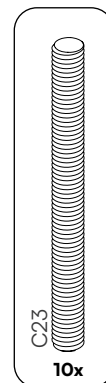
Viel Spaß beim Aufbau!



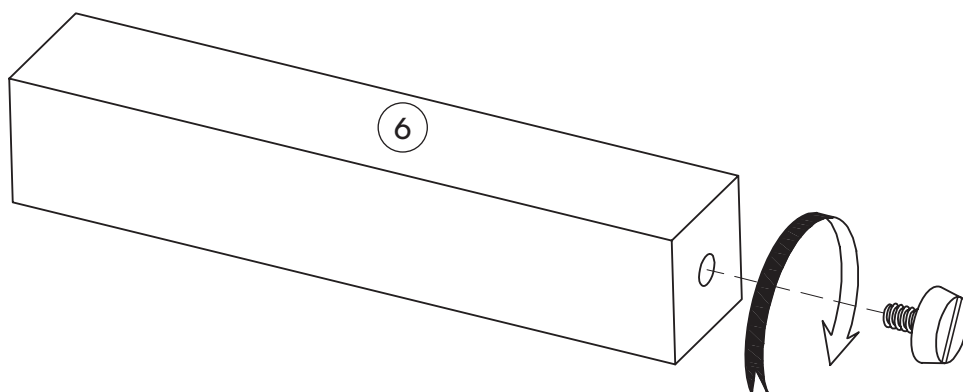
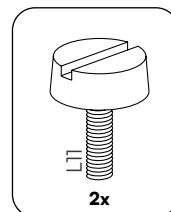
1  2x



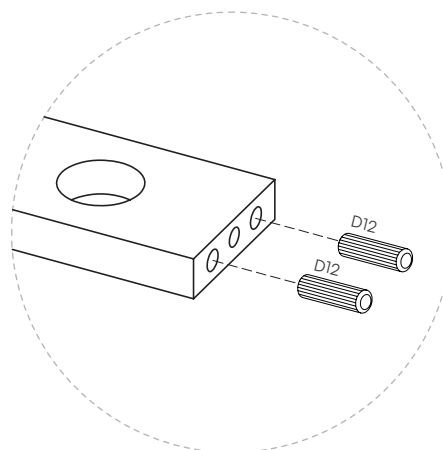
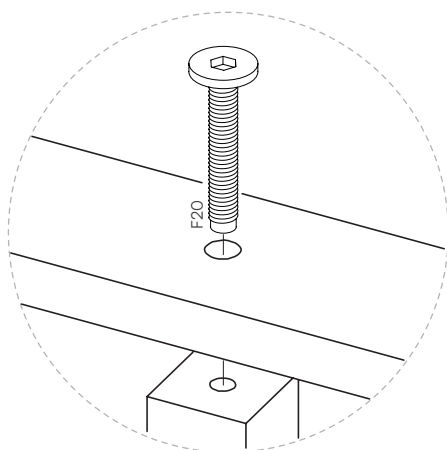
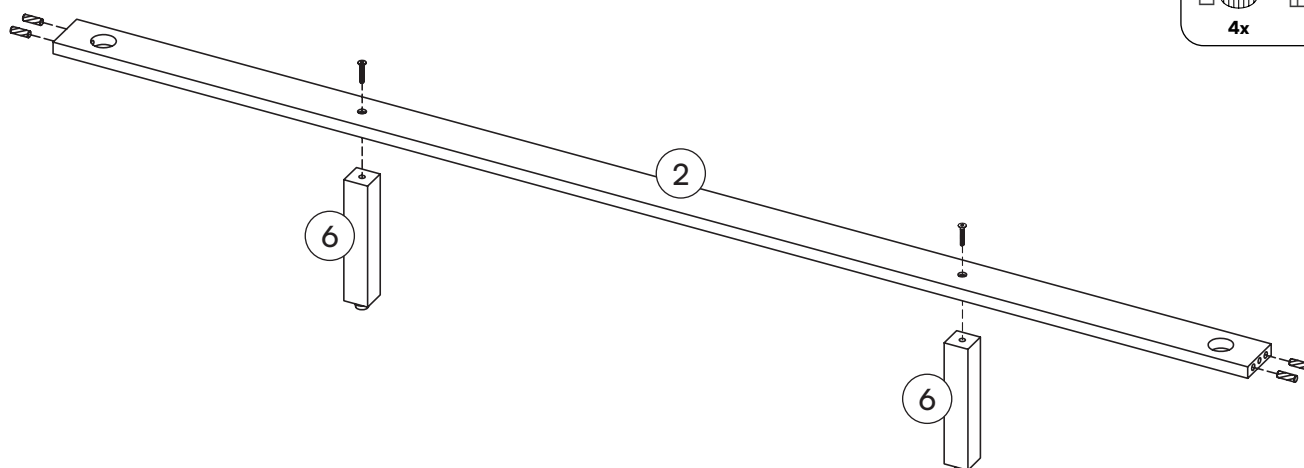
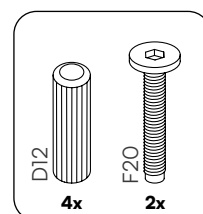
2 



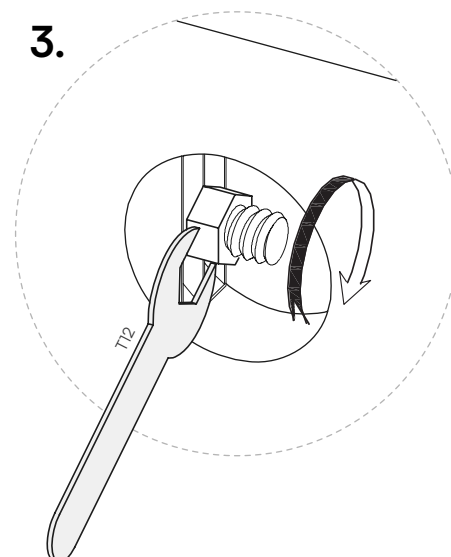
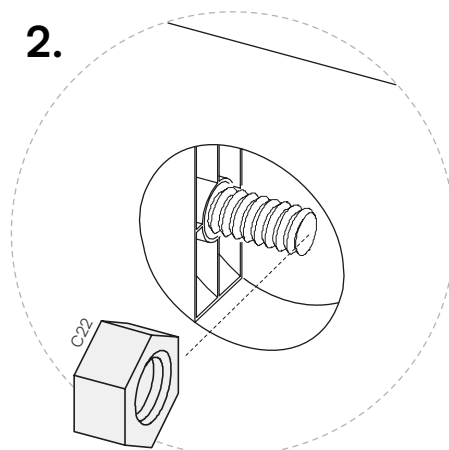
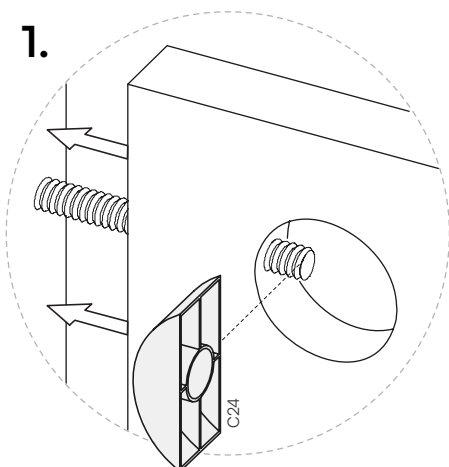
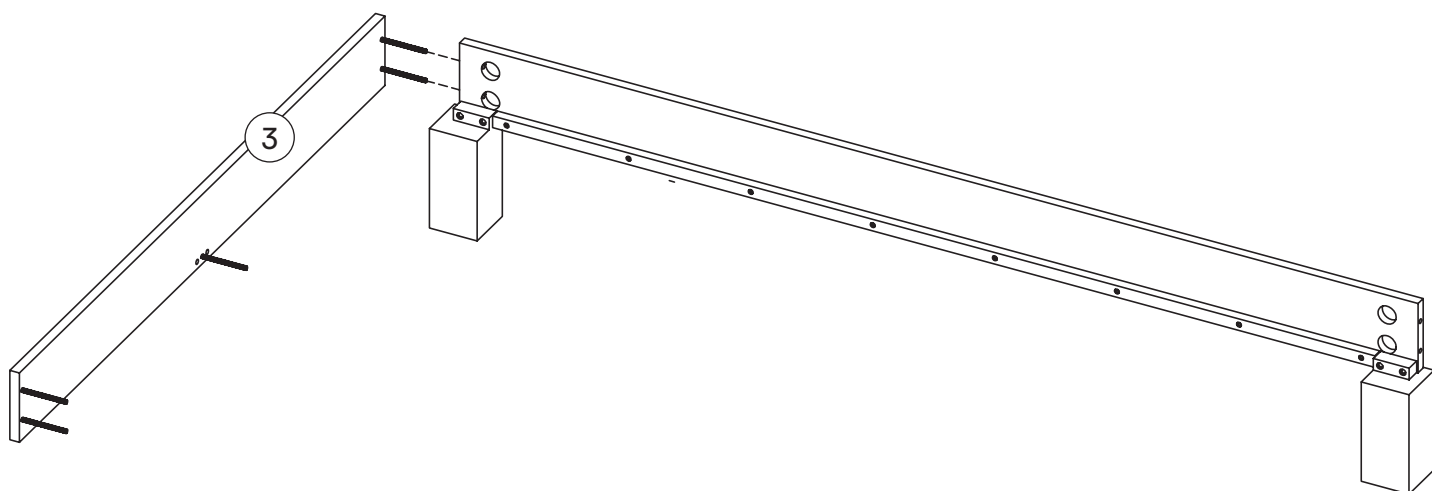
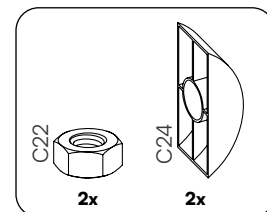
3 



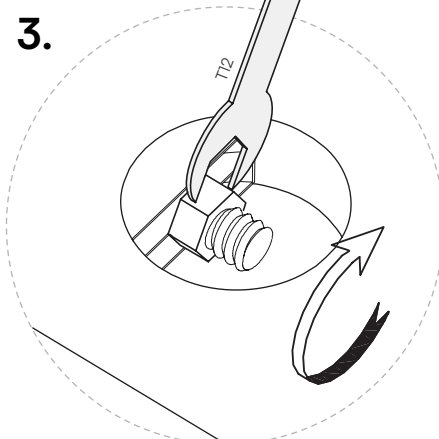
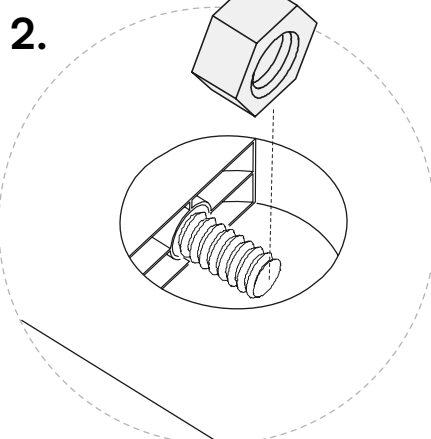
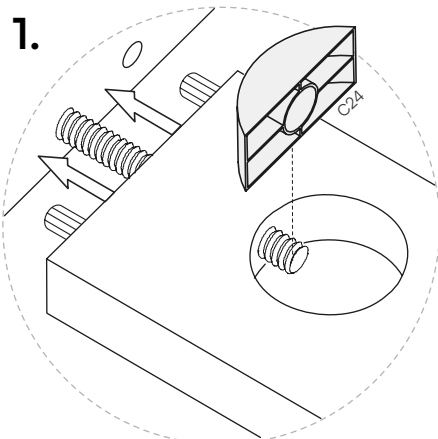
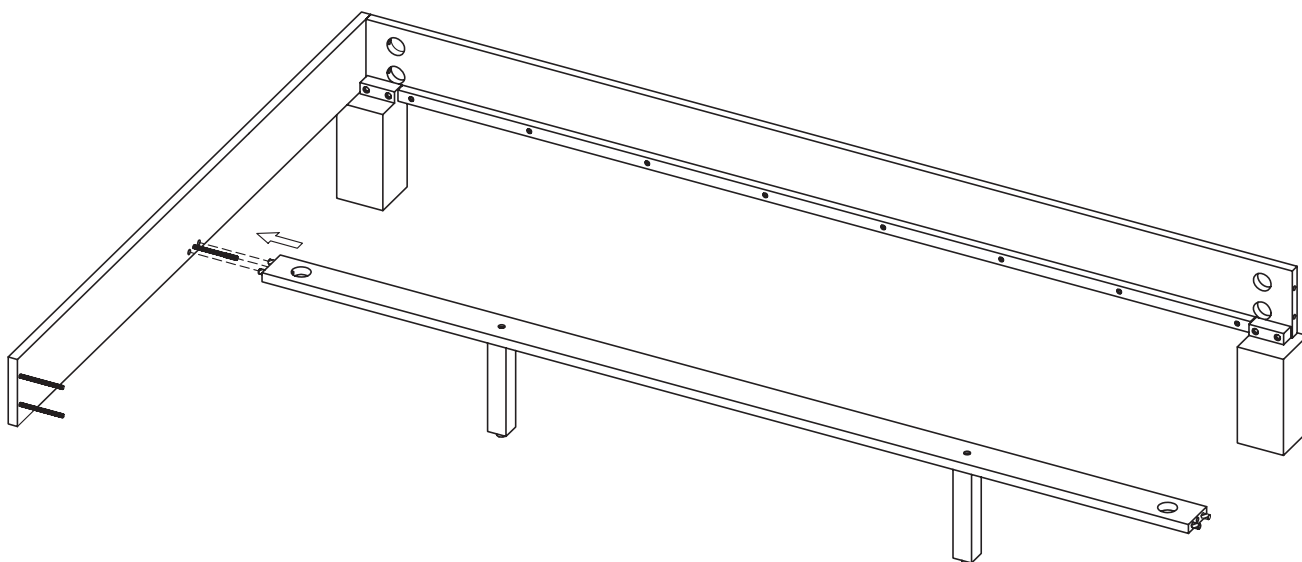
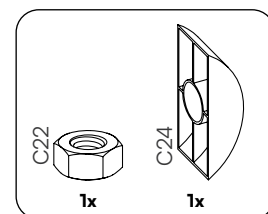
4



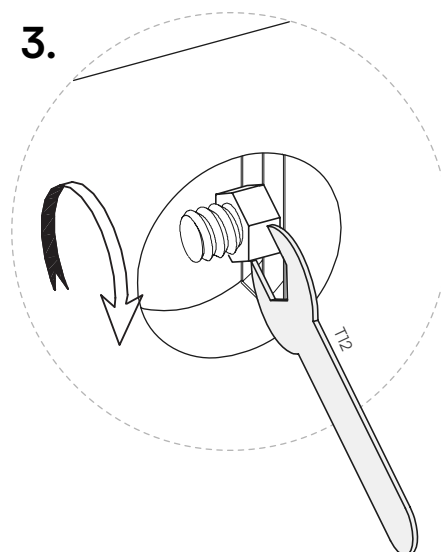
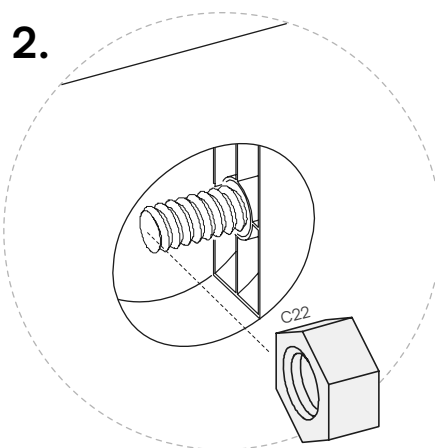
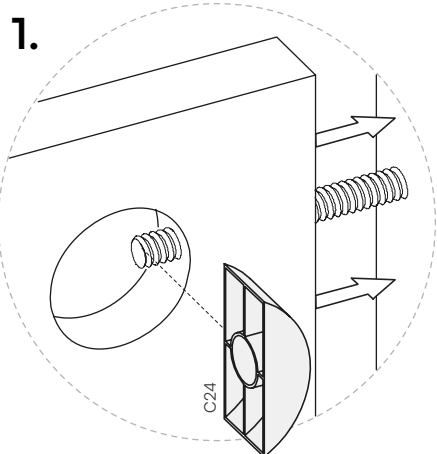
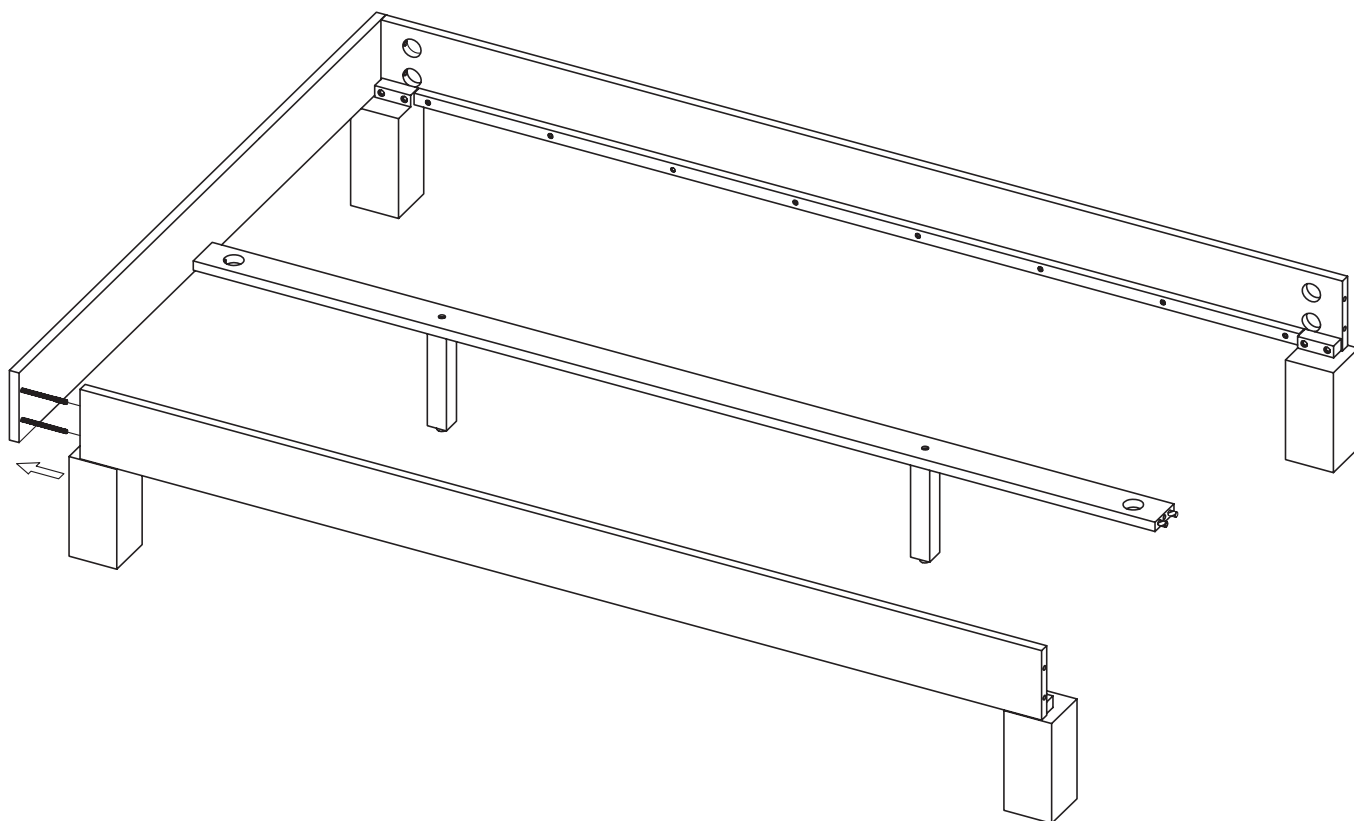
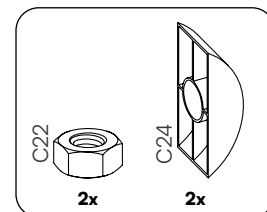
5



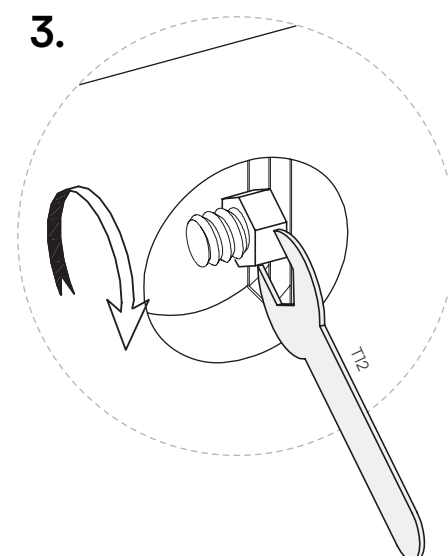
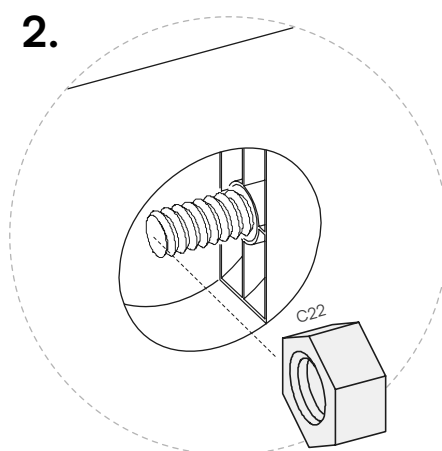
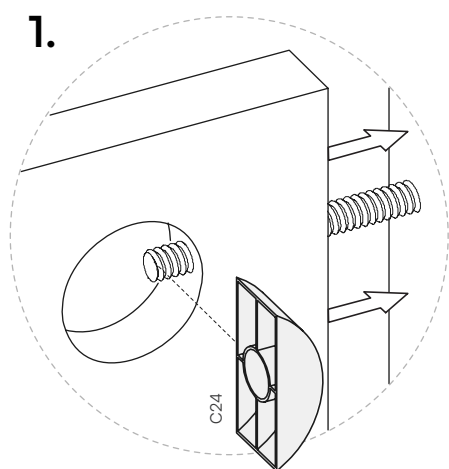
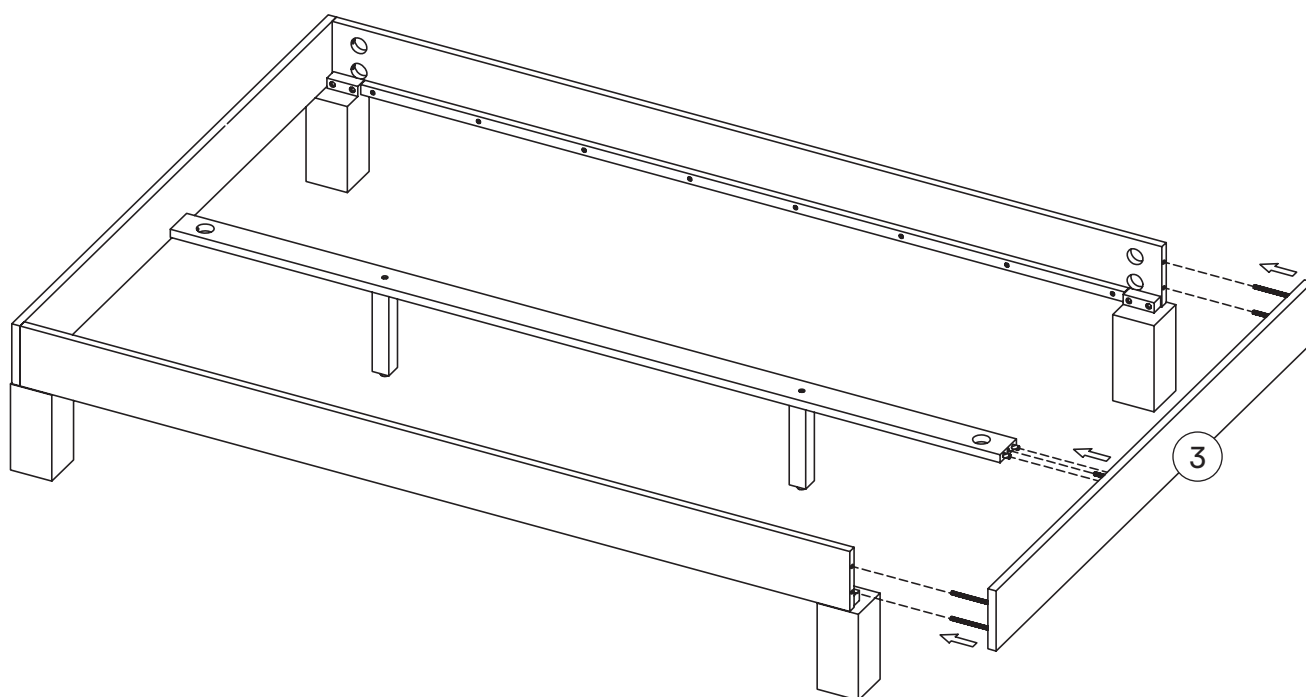
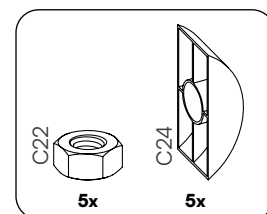
6

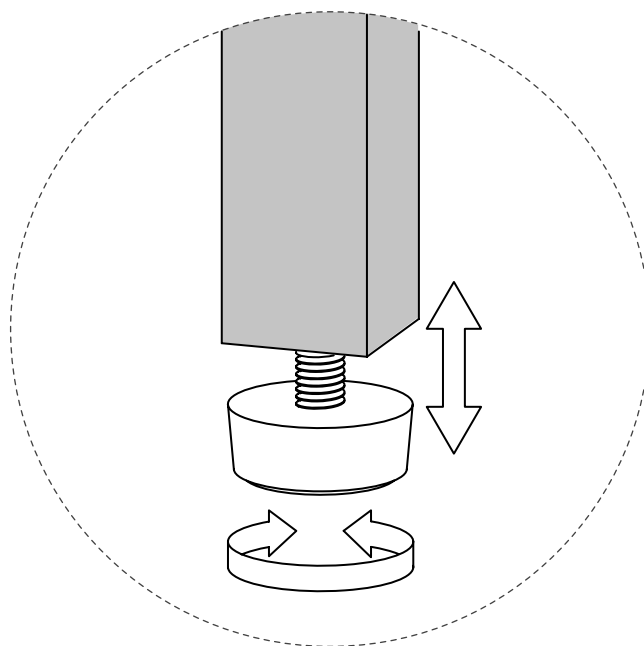
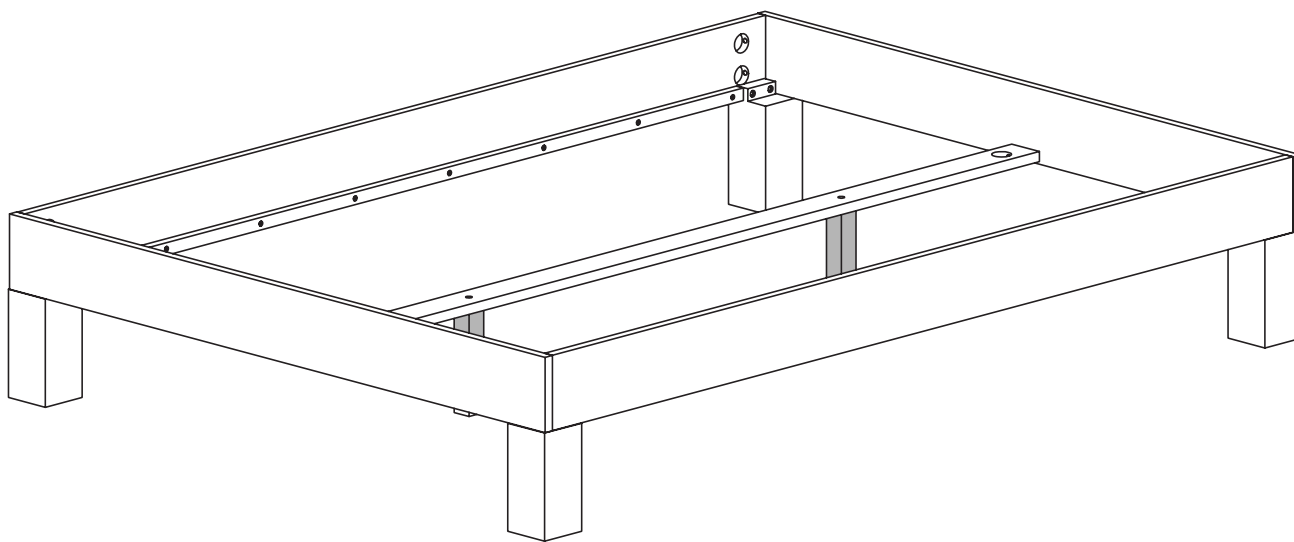


7



8





Geschafft!



skølm.

